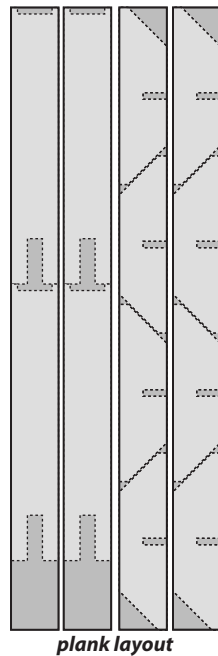
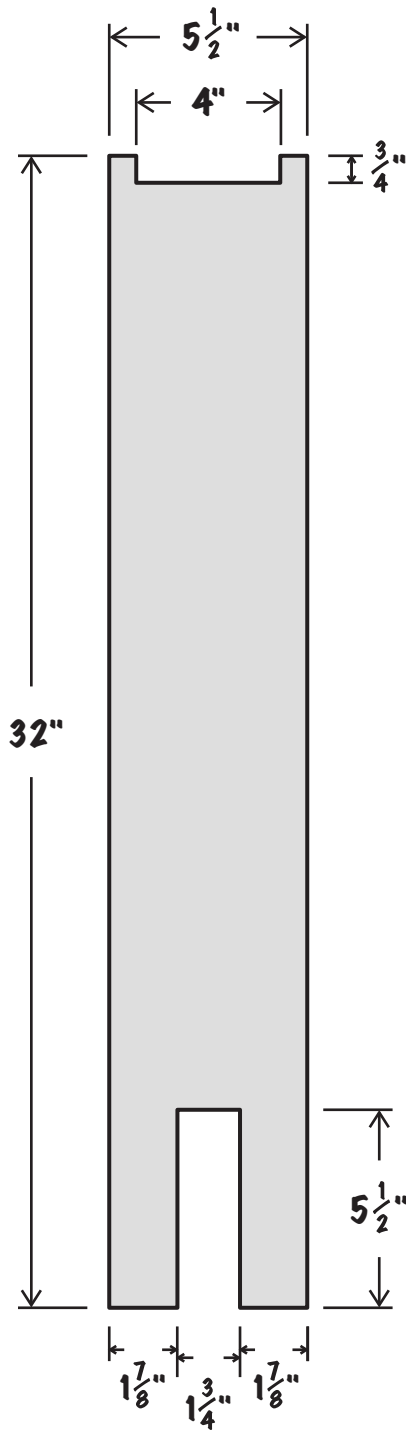
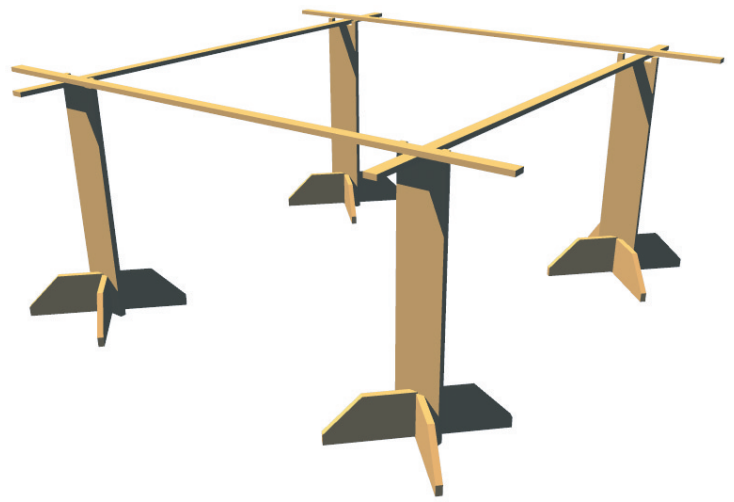


the *EASY* guide to
tie quilting

Quilting Frame Plans

The easiest way to build your frame is from planks, but if you have the tools you can also make one from a sheet of plywood. This frame is designed to be constructed without the use of glue or screws. Dismantles easily for storage. For easy removal of staples or tacks, attach a strip of thick fabric along the tops of the frame boards.



Plank Construction

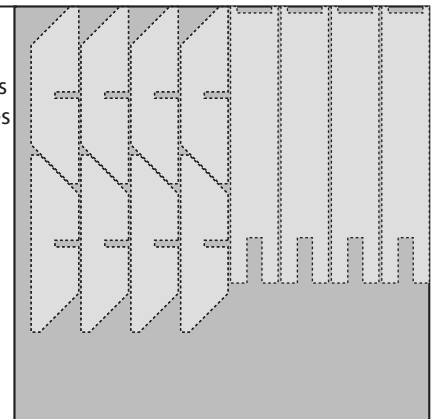
- 4 boards, 6' long x 5 1/2" wide x 3/4" thick

We suggest Pine or Cedar without knots or pitch (sap). Lumber is actually smaller than described in stores. A 6'x6"x1" board is what you will find in the lumber store but the actual measurements will be as you see above. Use a measuring tape to be sure.

Plywood Construction

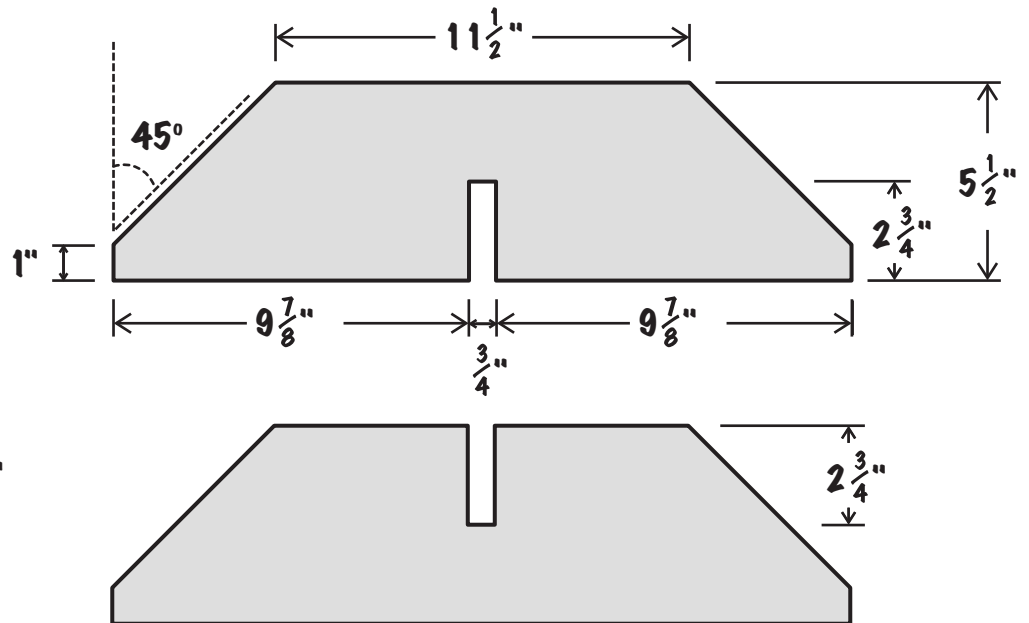
- 1 sheet, 4' x 4' x 3/4"

Select plywood with a nice finish. Plywood usually comes in 4'x8' sheets but most stores also carry 4'x4'.



Frame Board Sizes

- Cedar 1" x 2" (no knots)
- Baby - 6' x 6'
- Crib - 6' x 8'
- Twin - 8' x 8'
- Full - 8' x 8'
- Queen - 8' x 10'
- King - 10' x 10'



We are dedicated to making this an enjoyable and easy experience for you. Your comments or suggestions regarding these instructions are always welcome.